

Køge, Oktober. 1915.



KØGE I LANDETS FORSVAR

fra 1898 til 1918

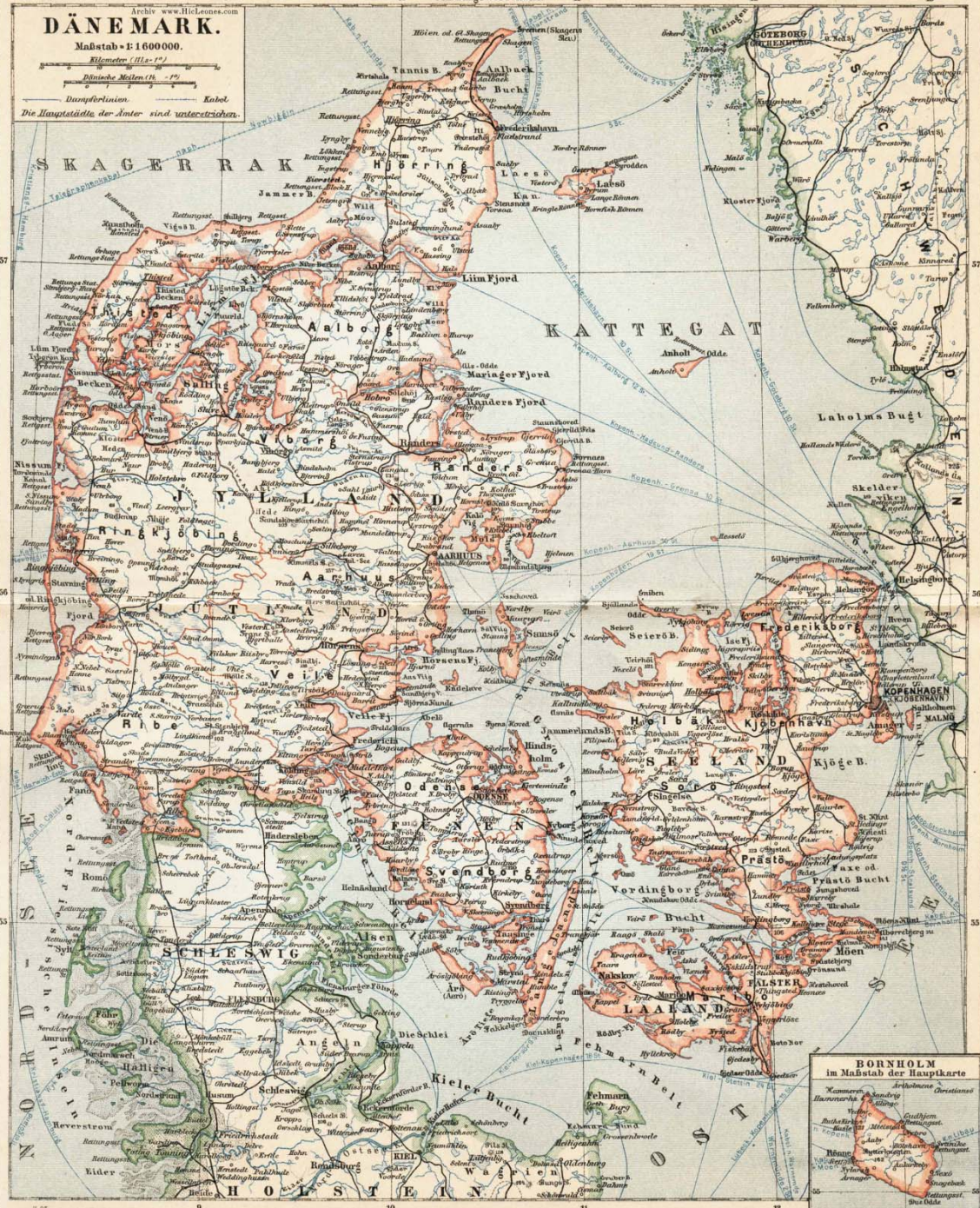
DÄNEMARK.

Maßstab = 1:600 000.

Kilometer (1:100 000)

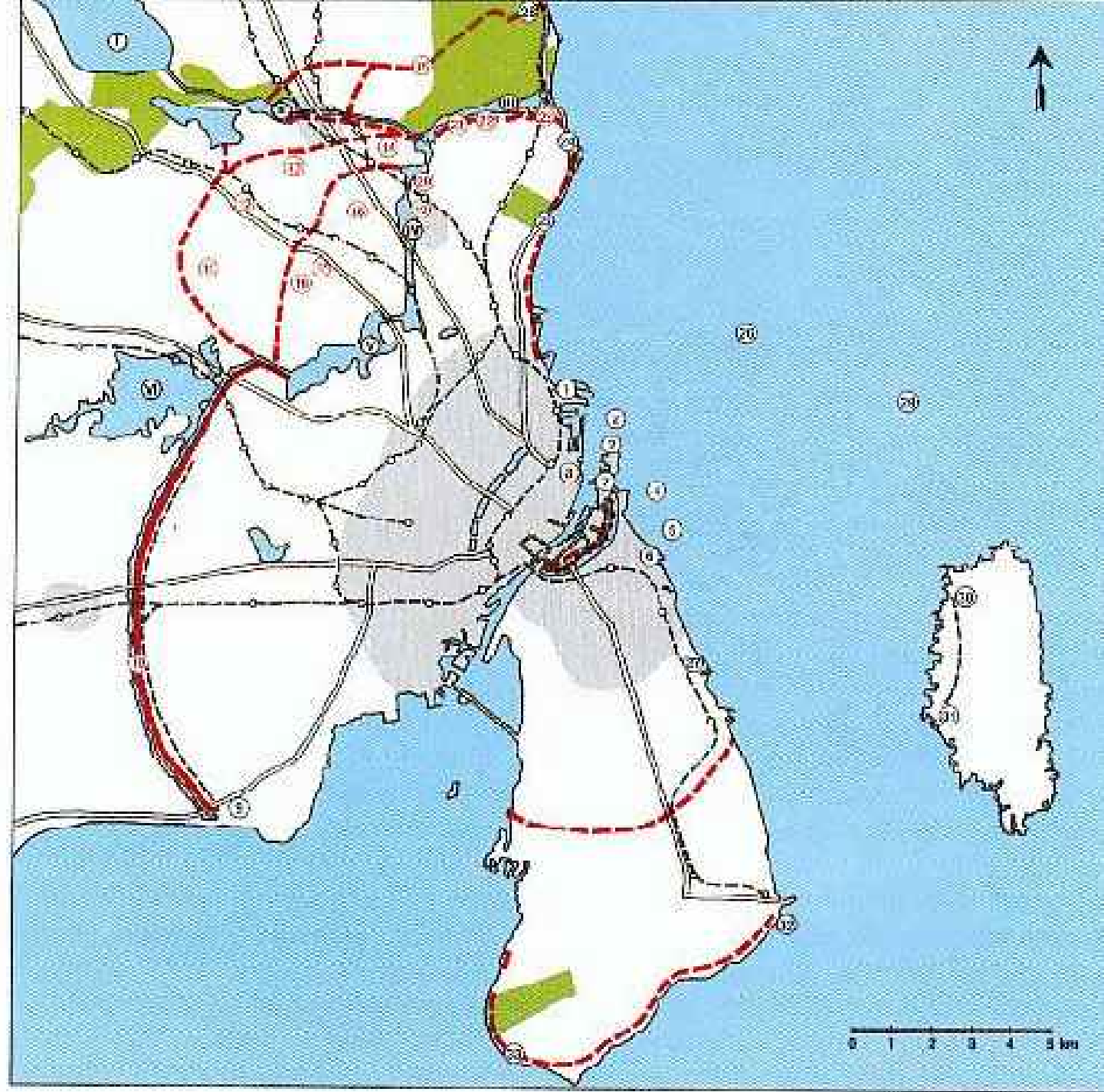
Deutsche Meilen (1:100 000)

Die Hauptstädte der Ämter sind unterstrichen.



BORNHOLM
im Maßstab der Hauptkarte

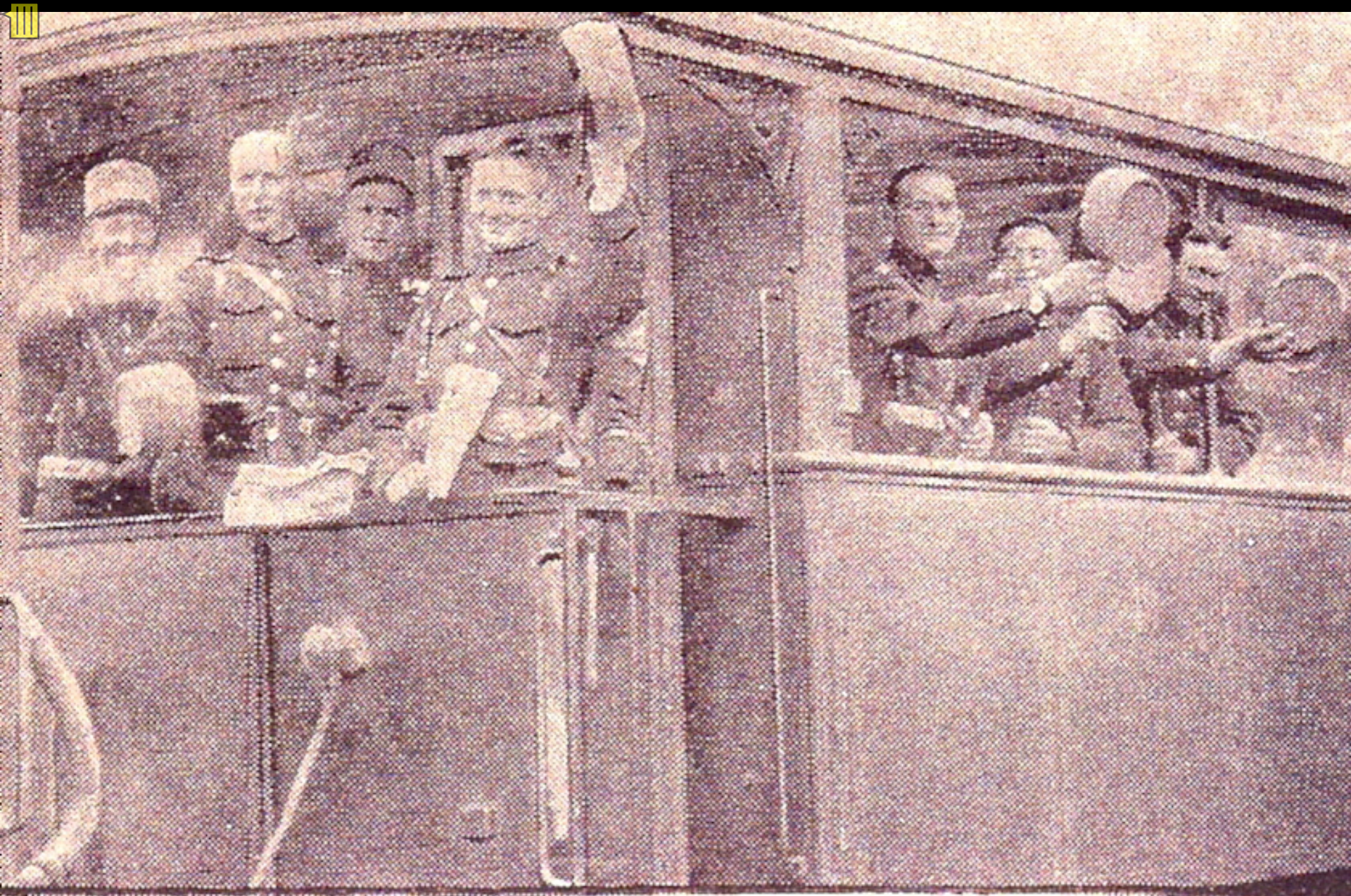
Kammerherren	Arvidsson
Landeshauptmann	Arvidsson
Landeshauptmann	Arvidsson
Landeshauptmann	Arvidsson
Landeshauptmann	Arvidsson
Landeshauptmann	Arvidsson
Landeshauptmann	Arvidsson
Landeshauptmann	Arvidsson
Landeshauptmann	Arvidsson
Landeshauptmann	Arvidsson
Landeshauptmann	Arvidsson









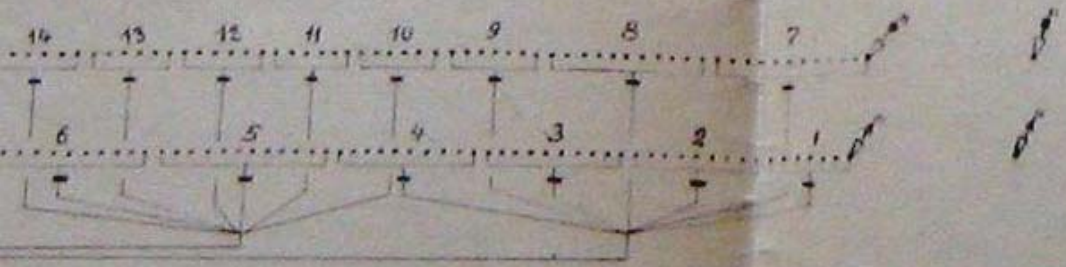
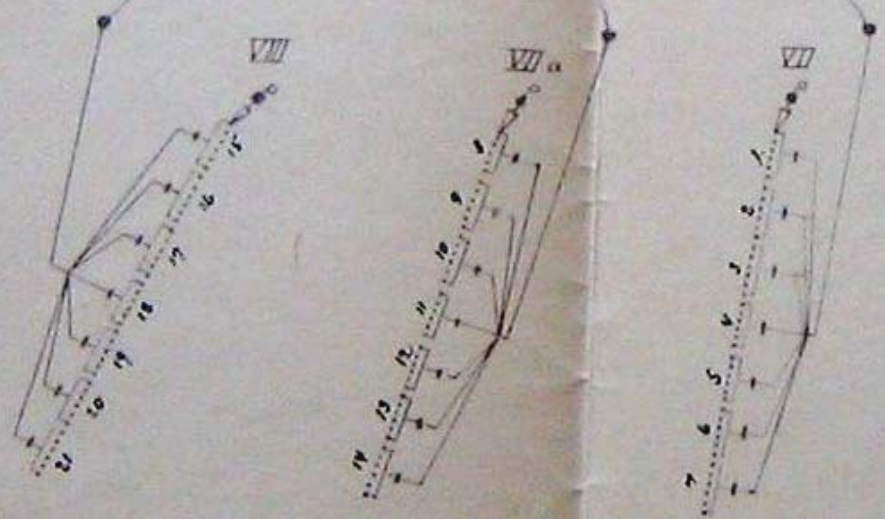


Danske Soldater i et Mobiliseringstog.











Skitse 1.

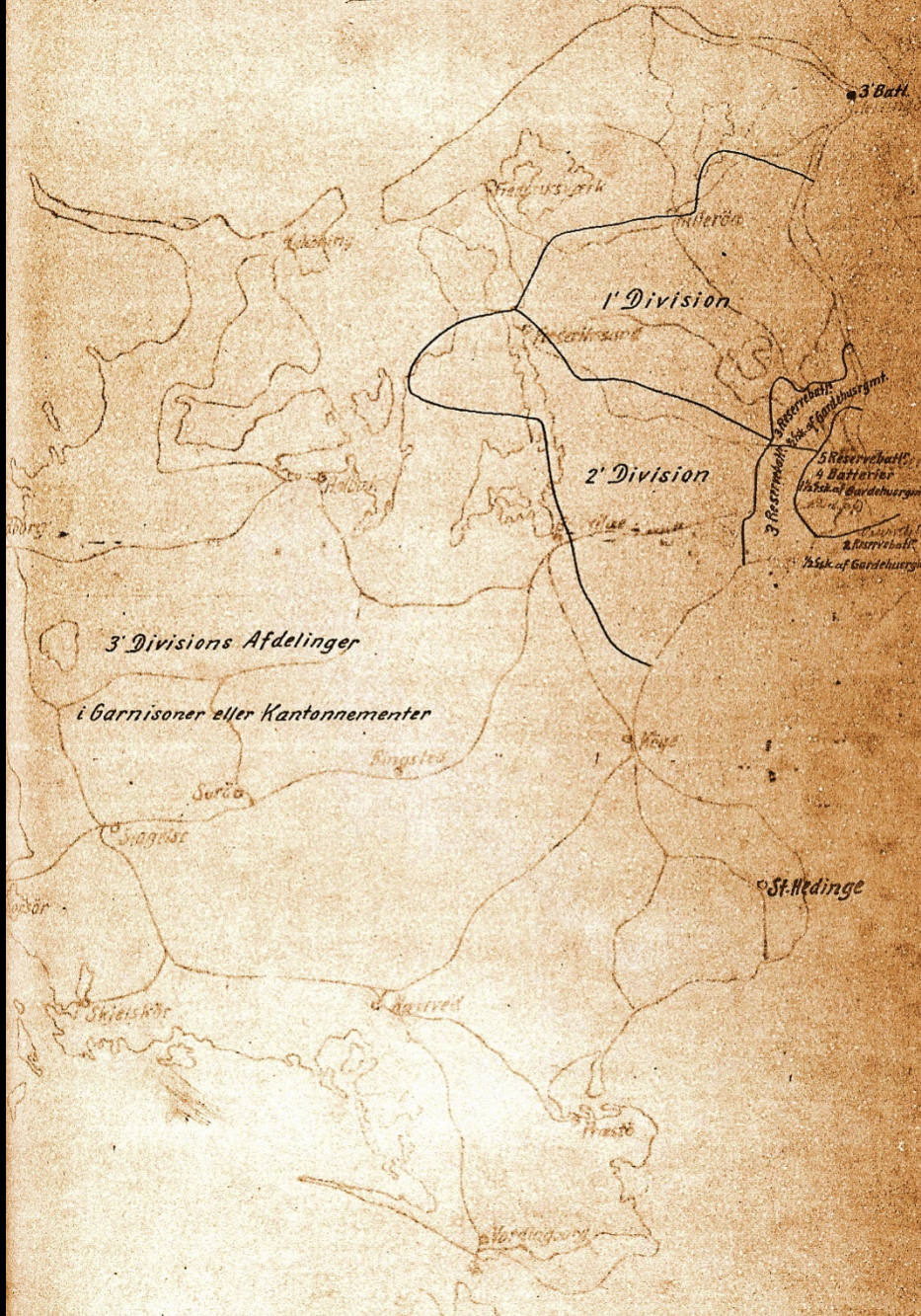
Situationen fra 17/8 - 14/10 1914.

1920



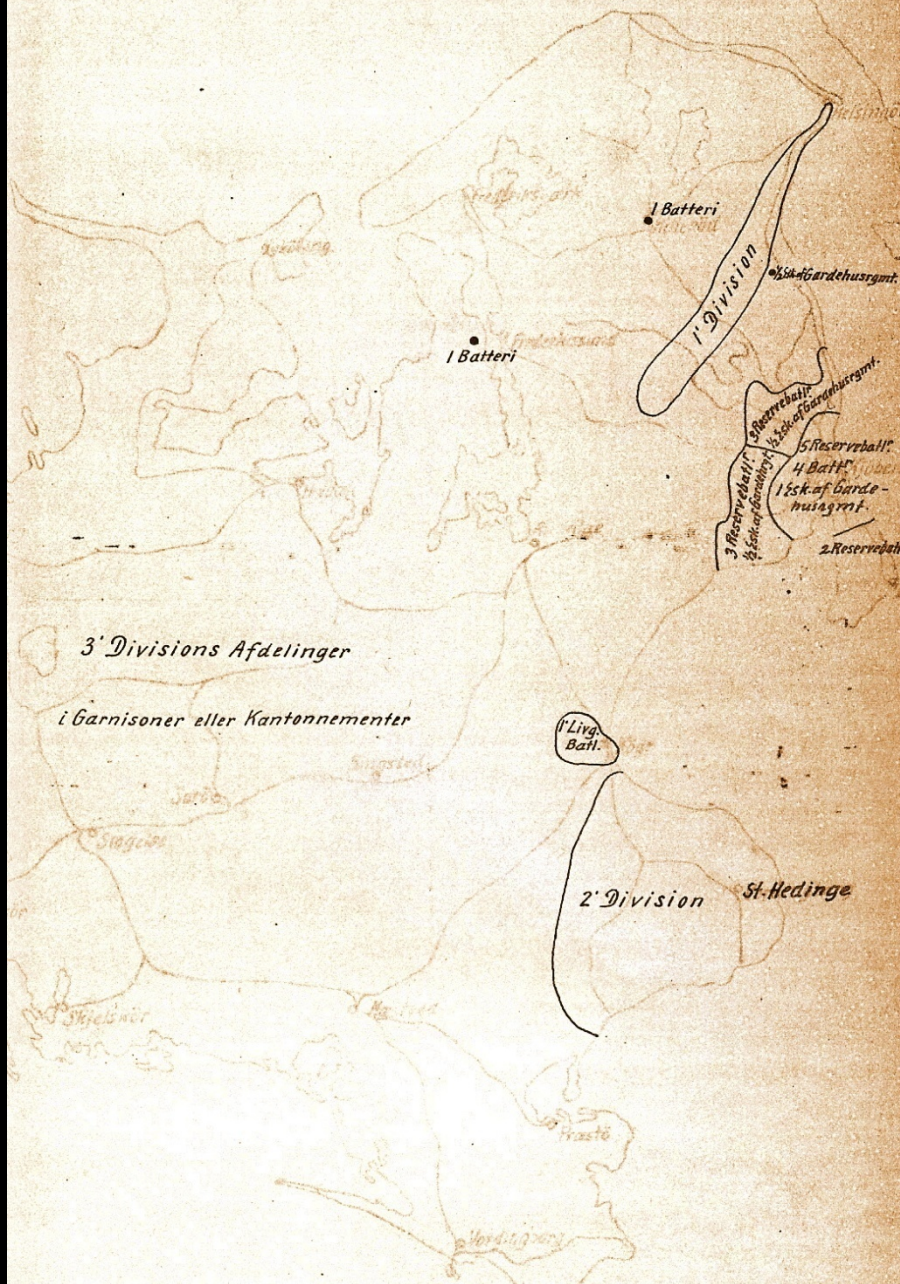
Skitse 2.

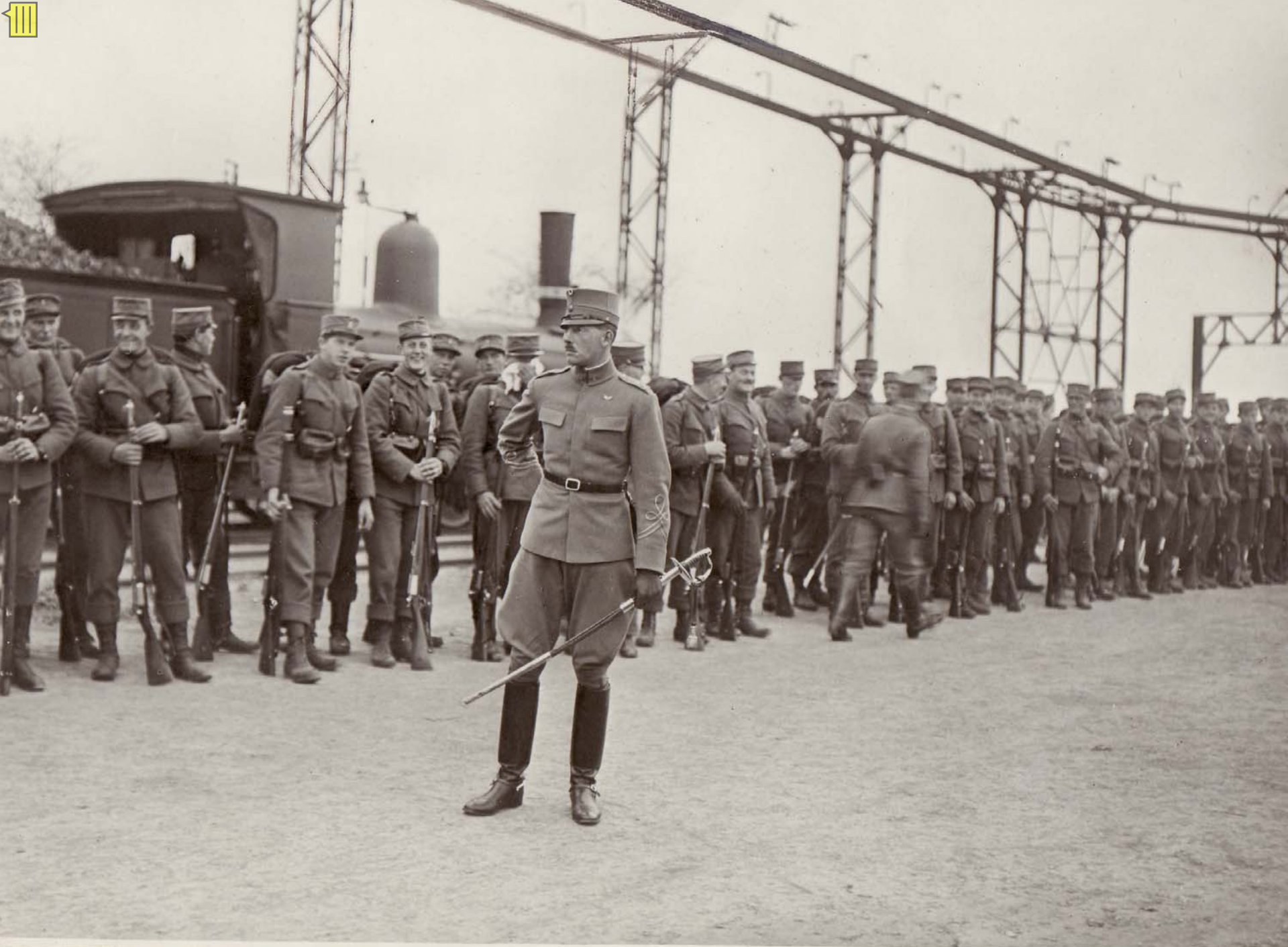
Situationen fra 15/10 1914 - 2/5 1915.



Skitse 3.

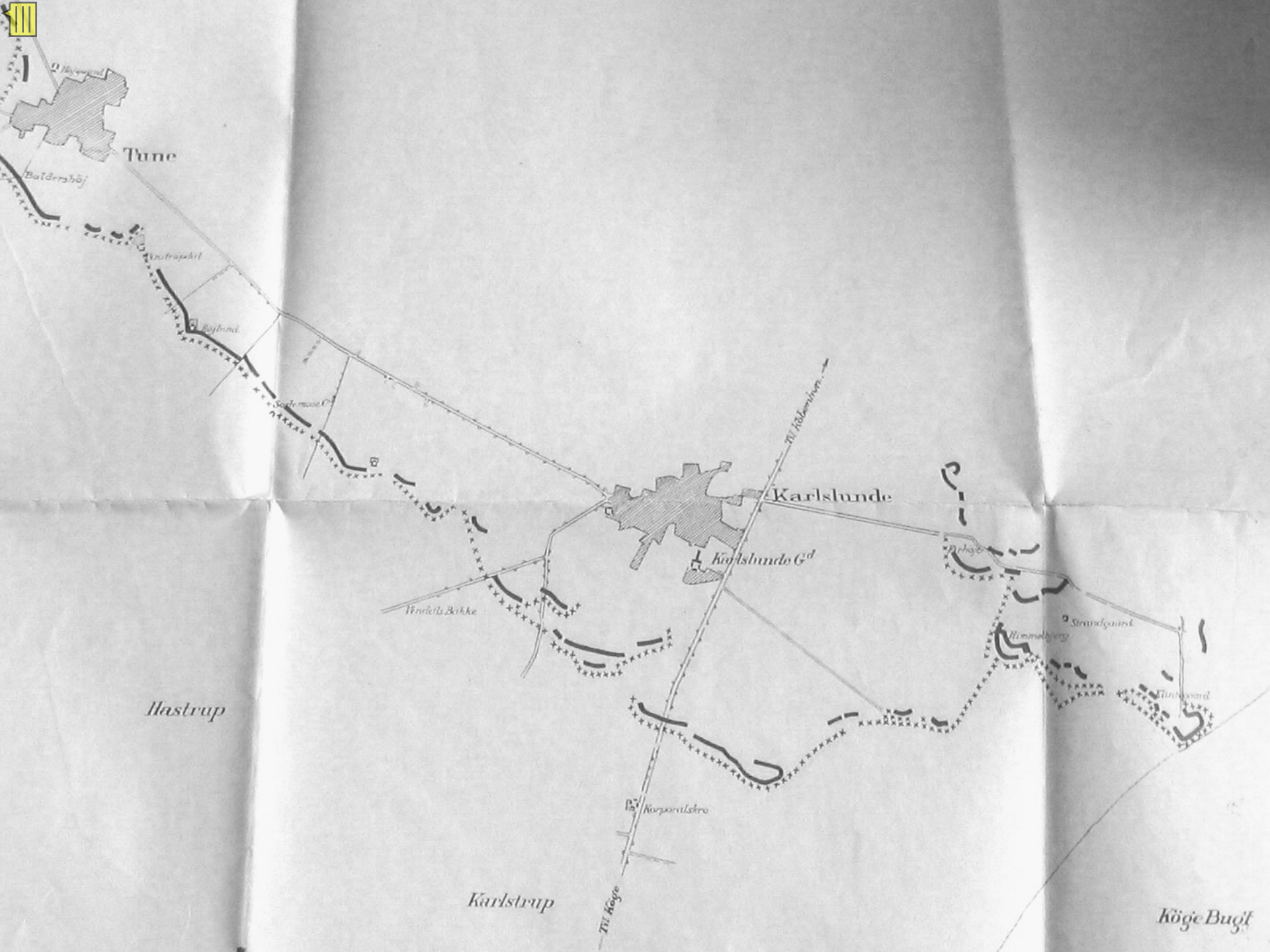
Situationen fra 22/5 - 15/8 1915.

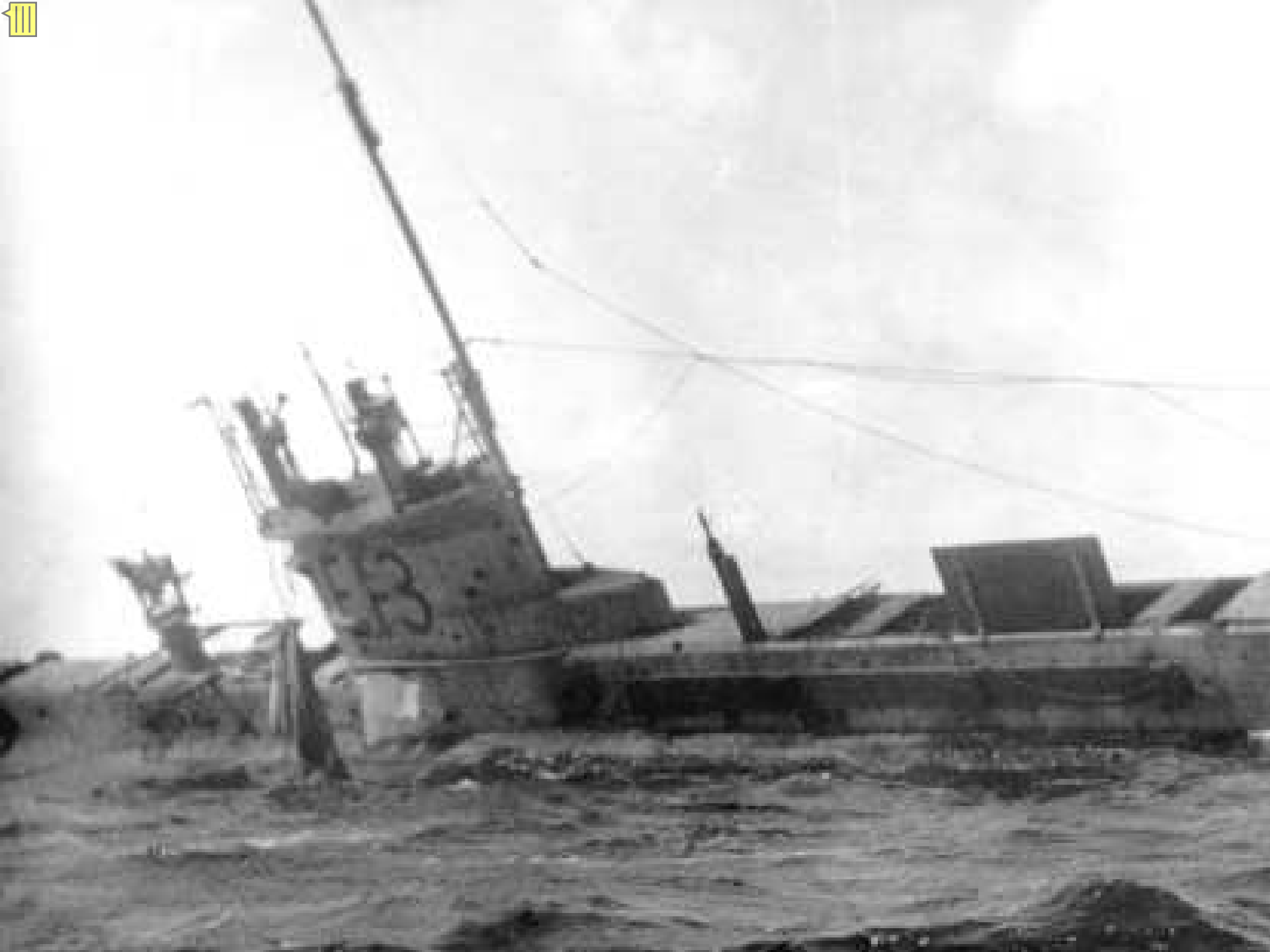


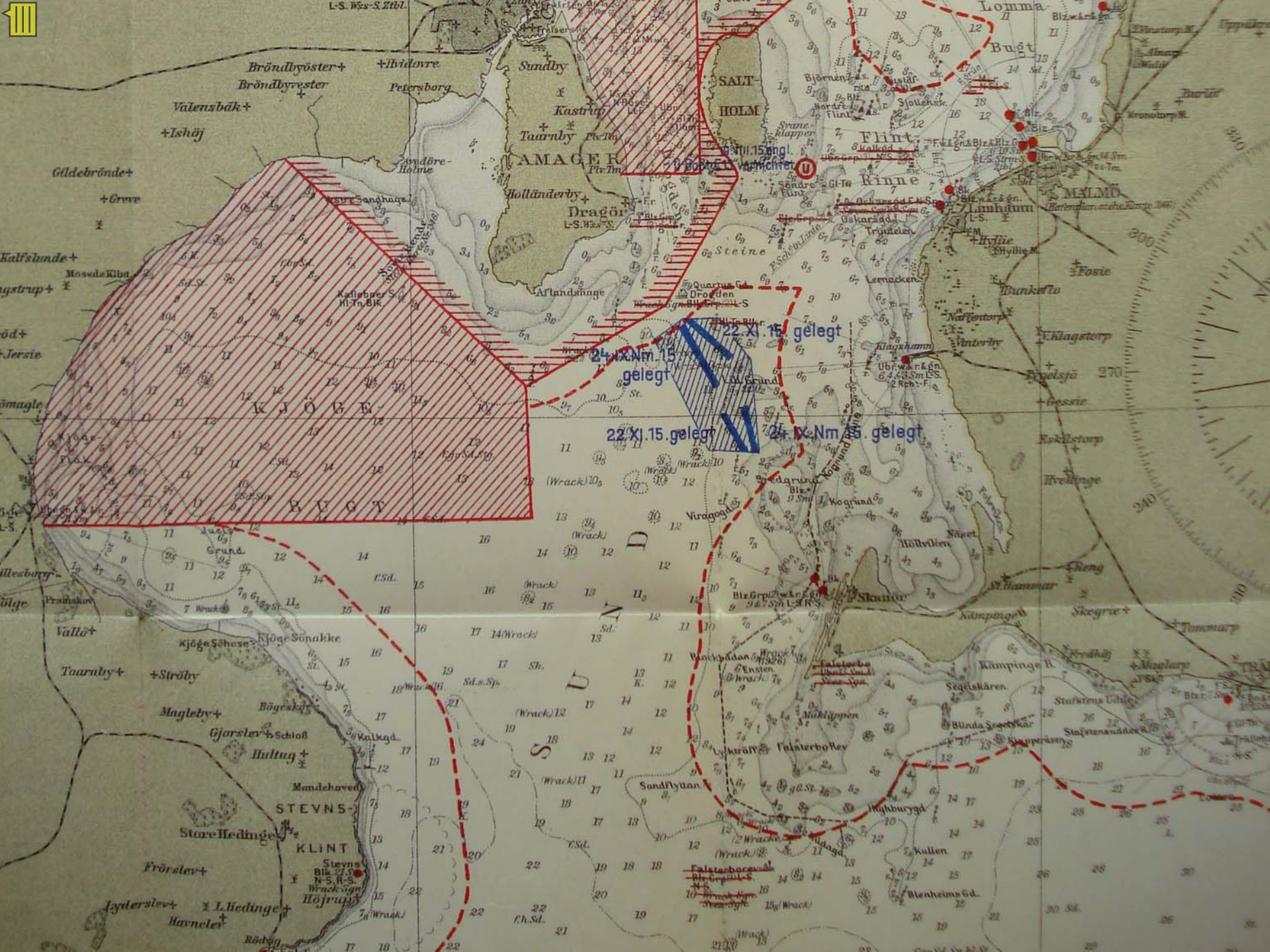












Bröndbyöster+
Bröndbyvester
Valensbåk+
+Ishøj

Sundby
Kastrup
Taarnby
AMAGER
Holländerby
Dragon

SALT
HOLM

Lomma
Bugt

Flint
Kinne

MALMO
Hyllie

24 X Nm 15 gelegt
22 X 15 gelegt

22 X 15 gelegt
24 X Nm 5 gelegt

Gildebrönde+
+Greve
Kalfshunde+
+Ströby
+Hultug+
+Mantehoved+
+Stevns+
+Klint+
+Frørslev+
+L.Hedinge+
+Havnelev+

S
U
N
D

Falsterbofey
Sandflytan

Kämpinge B
Segelskären
Blunda
Kullen

Wenheims Gd.



WYNEEN



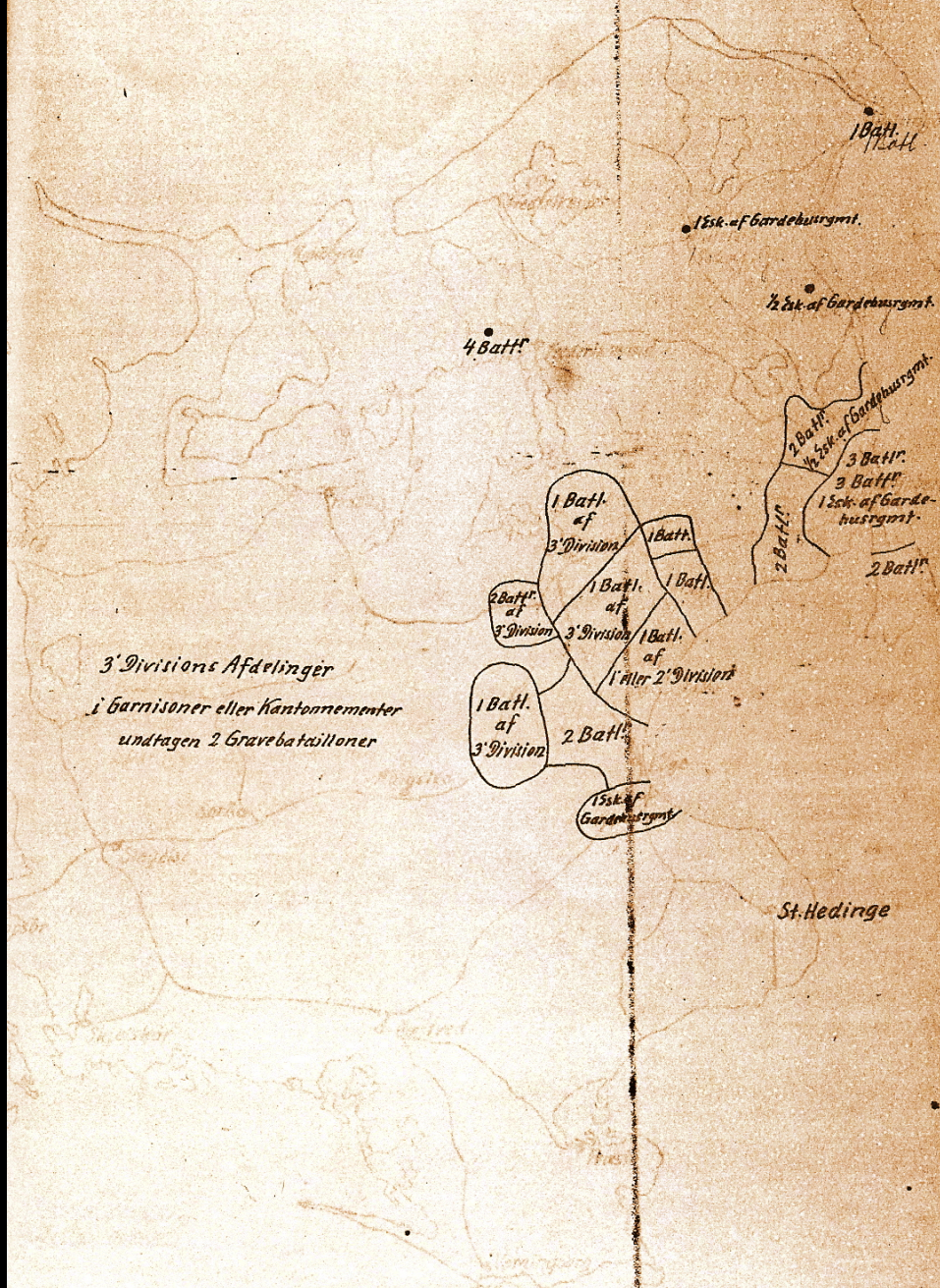
Skitse 5.

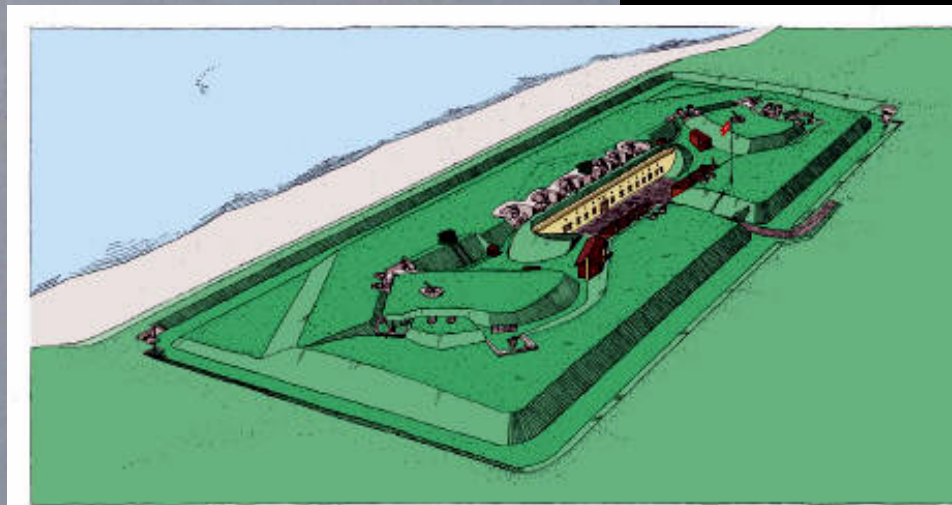
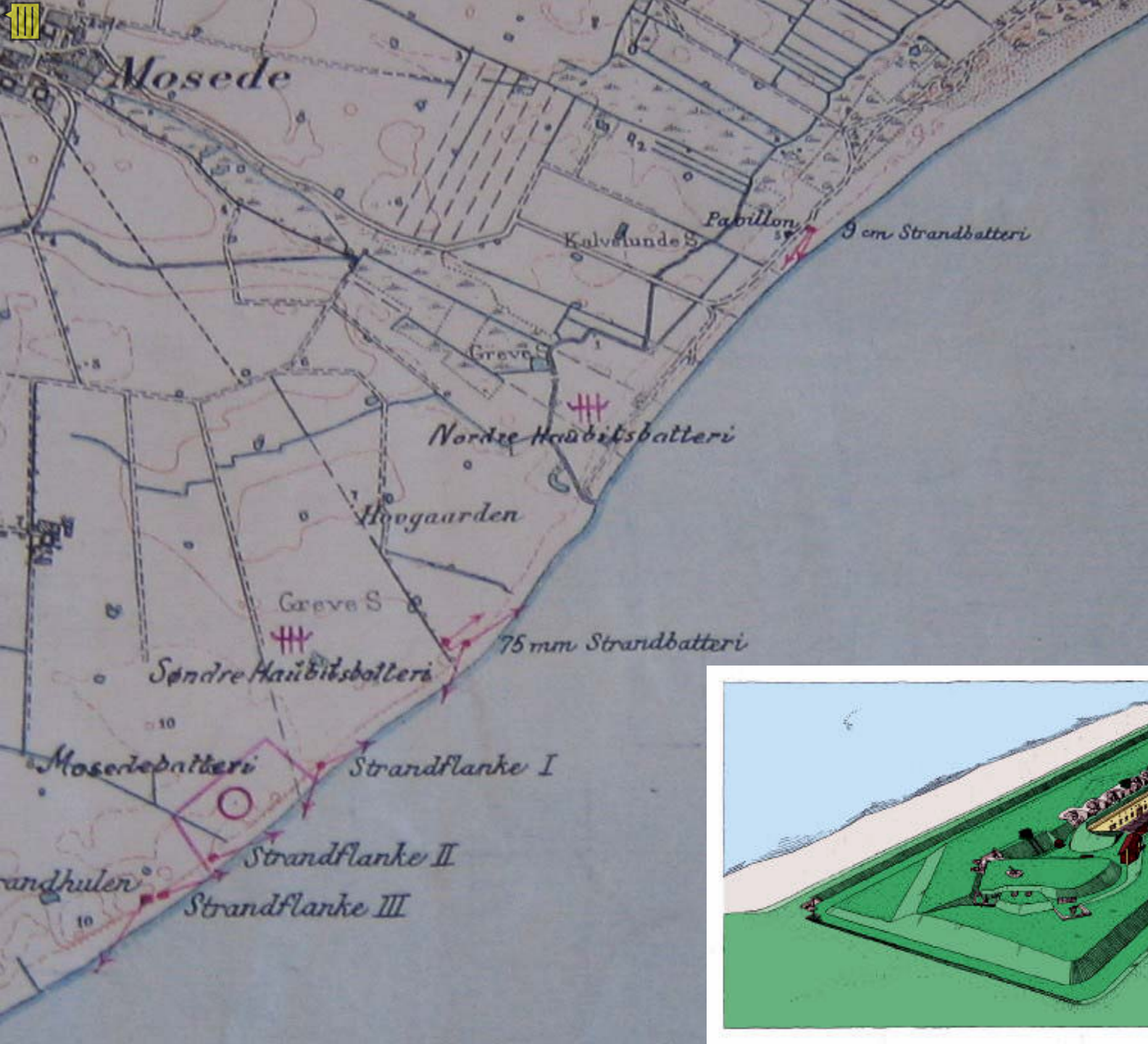
Situationen fra $\frac{15}{10}$ 1915 - $\frac{15}{6}$ 1916.



Skitse 6.

Situationen fra $\frac{15}{6}$ - $\frac{15}{10}$ 1916.







NORWEGEN

Skagerrak

geplante
Minensperre

SCHWEDEN

Kattegatt

DÄNEMARK

KOPENHAGEN

Fredericia

Esbjerg

Sund

NORDSEE

OSTSEE

großer Belt

Kleiner Belt

Kiel

Wilhelmshafen









Lejren ved Køge